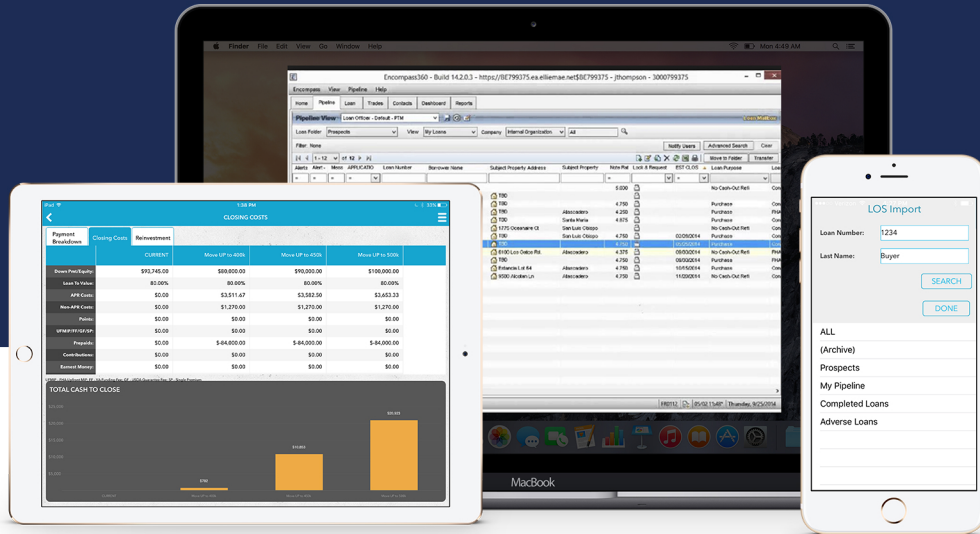


Mortgage Coach and Encompass Integration



Convert Borrowers Faster and Easier

Mortgage Coach is the mortgage industry's only comprehensive borrower conversion platform. With Mortgage Coach's Total Cost Analysis, financial and real estate professionals provide clearly illustrated mortgage options with detailed financials, charts, video narration, and real-time updates on any device, ensuring an informed home loan decision.

Encompass Digital Mortgage Solution automates the entire loan life cycle. The Encompass solutions provide an integrated, true digital platform to originate more loans at lower costs, reduce time to close, and make smarter decisions. Mortgage Coach integration with Encompass provides Loan Originators with a streamlined workflow to import borrower information and product and pricing selections to automatically create the Mortgage Coach Total Cost. With the seamless integration, redundant data entry is eliminated and information from Encompass is automatically exported to Mortgage Coach without the need to log in to multiple systems.

- Start a new client within Mortgage Coach by clicking "LOS Import".
- Enter either the Encompass Loan Number or Borrower Last Name.
- Select a folder to search for the client (All, Prospects, My Pipeline, Completed Loans, Adverse Loans).
- Select the loan report you want to import.
- Click import and the borrower information automatically imports to Mortgage Coach from Encompass.



Eliminates the need to log in to multiple systems



Automates the data entry process by eliminating redundant data entry



Speeds the process of creating and presenting loan options to borrowers



Transforms the origination process into a true digital experience



Enhances customer service by responding to borrower requests for home loan financing with trusted advice anytime, anywhere and on any device